



**Lighter
Stronger
Better!**

A: 29 Snook St Clontarf QLD 4019
A: PO Box 122 Margate QLD 4019
P: 07 3897 5700
F: 07 3811 6480
E: info@ecb.com.au
W: ecb.com.au
W: customalloy.com.au



REPLACES: 31.05.15
REVISED: 31.03.21

8M155SY / NB6M155SY / NBM155SY

FITTING INSTRUCTIONS MITSUBISHI TRITON MQ 03/15-10/18 TYPE 8, 76MM SERIES 2 NUDGE BAR & 76MM NUDGE BAR VEHICLE FRONTAL PROTECTION SYSTEM (VFPS) FOR AIR BAG & ADR COMPLIANT VEHICLES

Ensure these instructions are left with the vehicle owner and/or operator.

Check installation hardware before commencing.

1. Remove two 12mm head bolts from front of stone tray, loosen rear two bolts and remove stone tray from vehicle.
2. Fit 58mm tube spacer and 3/8 x 4 bolt and flat washer (supplied) into rail as shown in **figure 1**.
3. Fit ECB steel mounting brackets onto outside of chassis rail using bolts supplied M10 x 1.25 x 30mm bolt, flat washers, spring washer and nuts (supplied) in rear hole. Use 3/8 x 4 bolt, flat washers, 58mm tube spacer, spring washer (supplied) and nut in middle hole used in step 2. M10 x 1.25 x 30mm bolt, spring washer and flat washer (supplied) in front hole. See **figure 2**.
4. Align mounts to front of vehicle and **TIGHTEN ALL BOLTS**. See **figure 3**.
5. Fit ECB protection bar onto outside of steel mounting brackets using M10 x 1.25 x 40mm bolts, flat washers, spring washers and nuts (supplied) in rear hole per side. Fit M10 x 1.25 x 40mm bolt and washer on wire, flat washer, spring washer and nut (supplied) in front hole per side.
6. Align protection bar to front of vehicle. See **figures 4, 6 and 8** for front views and **figures 5, 7 and 9** for front views. **TIGHTEN ALL BOLTS**
7. Refit stone tray using original equipment in the reverse step of 1.

ENSURE NUMBER PLATE IS CLEARLY VISABLE

Note: When fitting/refitting the licence plate to the vehicle, ensure there is no obstruction to licence plate vision in accordance with local authorities. If required relocate licence plate to an alternate location.

Further VFPS Notes:

- a) Do not attach VFPS to the vehicle using anchorages not intended for this purpose (e.g. engine mounting bolts).
- b) Do not use this product for any vehicle make or model, other than those specified by the VFPS manufacturer.
- c) Do not remove the plaque or label from the VFPS.
- d) Do not modify the structure of the VFPS in any way.
- e) No accessory or fitment should project forward of the VFPS forward profile.
- f) **ENSURE THESE INSTRUCTIONS ARE LEFT WITH VEHICLE OWNER AND/OR OPERATOR.**

IMPORTANT INFORMATION

Periodically check bolts and nuts for correct tightness, especially if travelling on rough roads

FITTING KIT

1 – Pair steel mounting brackets	2 – M10 x 1.25 x 40mm bolts
2 – Tube spacers 10NB x 58 mm	2 – M10 x 1.25 x 40mm bolt and washer on 300mm wire
2 – 3/8 x 4 bolts	10 – M10 Spring washers
2 – 3/8 nuts	16 – M10 flat washers
4 – M10 x 1.25 x 30mm bolts	8 – M10 x 1.25 nuts



Figure 1

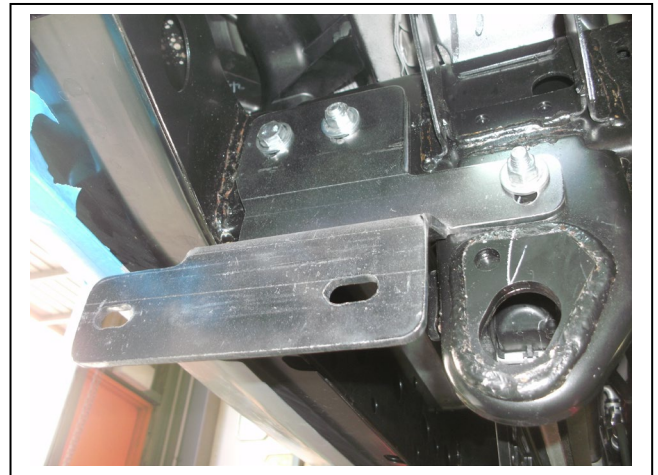


Figure 2



Figure 3



Figure 4: 76mm Nudge Bar front view



Figure 5: 76mm Nudge Bar side view



Figure 6: 76mm Series 2 Nudge Bar front view



Figure 7: 76mm Series 2 Nudge Bar side view



Figure 8: Type 8 Bar front view



Figure 9: Type 8 Bar side view

Thank you for purchasing an ECB Product

Please ensure that you read the below and complete the warranty registration.

Vehicle Owner / Operator Responsibilities and Product Care

Important Information

It is the responsibility of the vehicle owner and operator to ensure all nuts and bolts are checked periodically, especially when travelling on corrugated roads. Please ensure these are tightened as per the steps in the provided fitting instructions.

While ECB products are manufactured from high tensile alloy the vehicle owner / operator must check any steel mounting brackets or steel auxiliary parts for signs of corrosion. If you find any corrosion, please contact ECB Pty Ltd to discuss an appropriate solution – 1800 069 145 or www.ecb.com.au.

Product Care

Polished Products

Being a premium mirror polished finish, regular maintenance will be required to keep that iconic ECB shine. We recommend using our own brand of Aluminium Polish. This formula has been tried and tested and in our opinion is the world's best standard.

Directions: Apply a small quantity of Aluminium Polish to a clean soft cloth and rub the metal surface. The longer the rubbing the brighter the surface becomes. Wipe off Aluminium Polish with clean soft cloth. Also suitable for motorised buffing machines. Note: There are more specific details on the polish bottle. Please read before use.

Powder Coated Products

Our powder coated finishes are very low maintenance. In fact, there is actually very little you will ever need to do for this product. Just clean it as you would your car and it will stay looking good as new.

ECB Aluminium Polish

When you're looking for that showroom finish look for your polished automotive products, you can depend on the no compromise quality of East Coast Bullbars Aluminium Polish. This specifically designed product is the best polish available and we guarantee that this \$#!+ works. Within our decades of manufacturing polished alloy products, we have trialled a large range of different polishes on the market and believe without a doubt that nothing beats the finish quality of East Coast Bullbars Aluminium Polish.

East Coast Bullbars Aluminium Polish is excellent for use by hand and is ideal for polished bullbars, nudge bar and stainless-steel products. This polish will clean, polish and protect your product from the elements whilst bringing your products back to that showroom finish look.





**Lighter
Stronger
Better!**

A: 29 Snook St Clontarf QLD 4019
 A: PO Box 122 Margate QLD 4019
 P: 07 3897 5700
 F: 07 3811 6480
 E: info@ecb.com.au
 W: ecb.com.au
 W: customalloy.com.au



Warranty Registration

Please Register your purchase online www.ecb.com.au/warranty-registration
 If you have any questions, please contact our national office on 1800 069 145 or www.ecb.com.au

Or post the below information back to ECB, PO Box 122, Margate, QLD 4019.

Contact Details

Name:	
Address:	
Email:	
Phone:	

Purchase Details

Purchased from:	
Date of Purchase:	

Product Details

(You can find this information on the silver label of your ECB Product)

Part Number:	
Work Order Number:	

By submitting this registration, you automatically subscribe to ECB's mail outs. You can unsubscribe at any time.



**Lighter
Stronger
Better!**

A: 29 Snook St Clontarf QLD 4019
A: PO Box 122 Margate QLD 4019
P: 07 3897 5700
F: 07 3811 6480
E: info@ecb.com.au
W: ecb.com.au
W: customalloy.com.au



We value your comments

Dear Fitter,

ECB would like to know how you went with the installation of this product. We value your comment and may need to contact you to clarify some details so please complete your contact details clearly.

We would appreciate if you could complete as many of the following details as possible.

Your Name:	Your contact No.
Product Part No.	Product Invoice No.
Product Description:	Make, model, and year of vehicle:
Product Work Order No.	Company your from/Company product purchased from:

Date of Fitment: ____/____/____

Was the fitting hardware supplied complete? Yes No

If no what was not supplied

Did the installation go well? Yes No

Please provide comments

Please draw diagrams if you need to.

Post to
Reply Paid 122
PO Box 122
Margate QLD 4019

Email to
info@ecb.com.au



**Lighter
Stronger
Better!**

A: 29 Snook St Clontarf QLD 4019
A: PO Box 122 Margate QLD 4019
P: 07 3897 5700
F: 07 3811 6480
E: info@ecb.com.au
W: ecb.com.au
W: customalloy.com.au



DESPATCH CHECKLIST 8M155SY / NB6M155SY / NBM155SY

Work Order #		See other side of this page for photos of all mounts
Finish:		
Transport:		
Due Date:		

OC..... 1 – Pair Steel mounting brackets.
BK..... 1 – Bolt Kit.



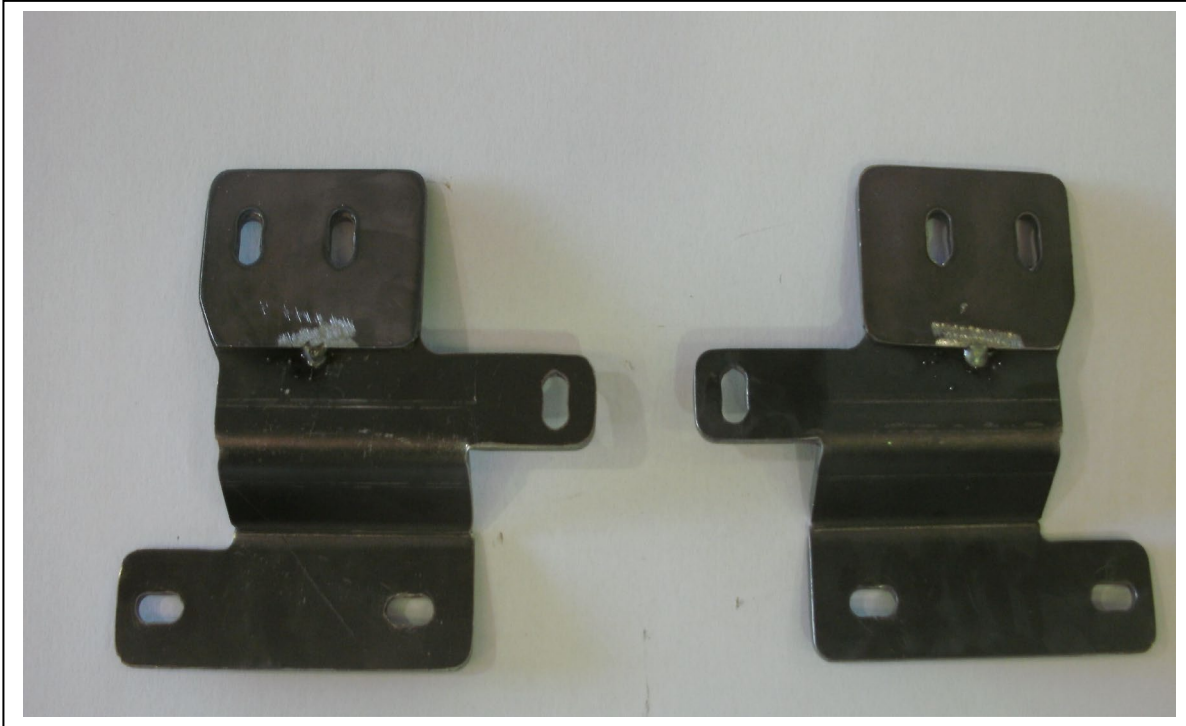
Is this product “the best it can be” Yes
If NO fix before continuing

All parts checked and completed by:

Nut and bolts: _____ Date / /

Order control: _____ Date / /

Final wrap check: _____ Date / /



Wrapper's initials / _____
Checker initials